

# THE CZECH EDUCATION SYSTEM

**SEPTEMBER 2011**



Jarmila Iblerová

# THE CZECH EDUCATION SYSTEM



# THE MINISTRY OF EDUCATION, YOUTH AND SPORTS

It is **responsible** for the conception, state and development of the education system

Since **1st January 2005** the Czech education system has been operating on the base of **the Education Act**.

The responsibility is distributed among the **central government, regions(14) and communities**.

# SCHOOL HEADS

They were given full responsibility for

the **quality** of educational process

financial **management**

appointing and dismissing **teachers**

**relations** with the community and the public  
(they must establish **School Council** – parents,  
pupils, educational staff and the public)



# **PUBLIC AND PRIVATE SCHOOLS**

**public schools**

98% of pupils

**private schools**

2% of pupils

**primary schools**

**compulsory education**

98.5% of pupils

**primary schools**

**compulsory education**

1.5% of pupils

**secondary schools**

84.7% of pupils

**secondary schools**

15.3% of pupils

**universities**

85.5% of students

**universities**

14.5% of students

# THE CZECH EDUCATION SYSTEM

<b>0-3</b>	<b>creches</b>
<b>3-5</b>	<b>nursery schools</b>
<b>5-6</b>	<b>pre - school year</b>
<b>6-11</b>	<b>primary schools</b> 1st stage
<b>11-15</b>	<b>primary schools</b> 2nd stage or grammar schools
<b>15-18</b>	<b>vocational schools</b>
<b>15-19</b>	<b>secondary</b> <b>technical schools</b>
<b>15-19</b>	<b>grammar schools</b>

## HIGHER EDUCATION

**Professional  
schools  
Art schools**

**2/3/4 years**

**Institutions  
and  
Universities**

**3-7 years**

# THE SCHOOL SYSTEM

## Pre-primary education – nursery schools

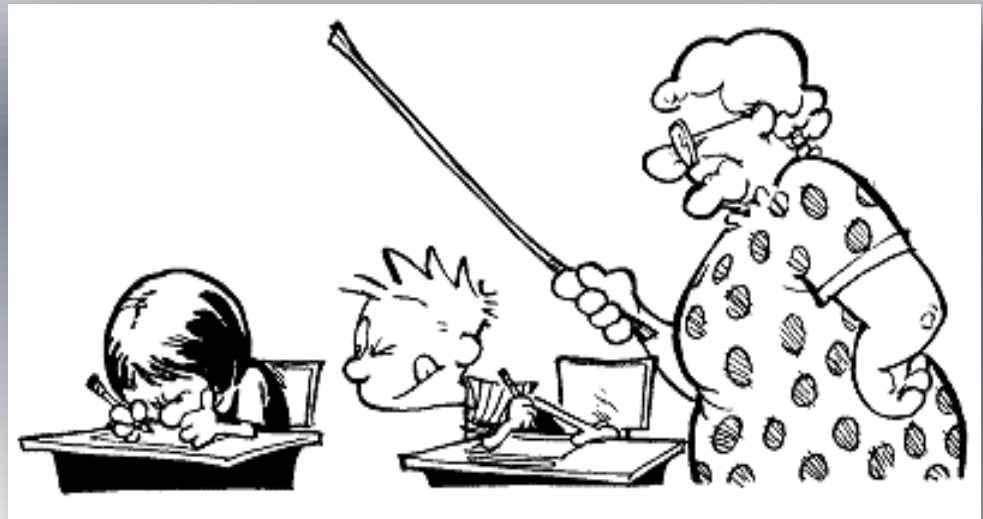
Age: 3-6                      84% of the total age group  
Pre-school year: 91% of children (free of charge)

## Primary education – primary schools

School attendance is **compulsory for 9 years**.  
There are **2 stages**.  
During the second stage it is possible to proceed  
**to the grammar school (11%)**.



# PRIMARY SCHOOLS





# **THE SCHOOL SYSTEM**

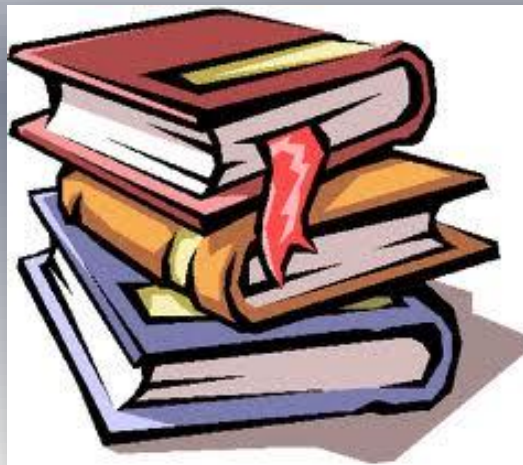
## **Secondary education**

**Grammar schools** – 4, 6 or 8 years  
The schools provide general education.

**Secondary technical schools** – 4 years  
Students are prepared for various branches or jobs (chemistry, business, arts....).

**Secondary vocational schools** – 3 years.  
Students are prepared for practical jobs as bakers, bricklayers, hairdressers etc.

# SECONDARY SCHOOLS



# THE SCHOOL SYSTEM

## Tertiary education

**Art schools**– 2/4 years.

Conservatoires – drama, film, dance, ballet...

**Tertiary professional schools** – 2/3 years.

These schools provide students with advanced technical knowledge.

**Higher education institutions** – 3-7years.

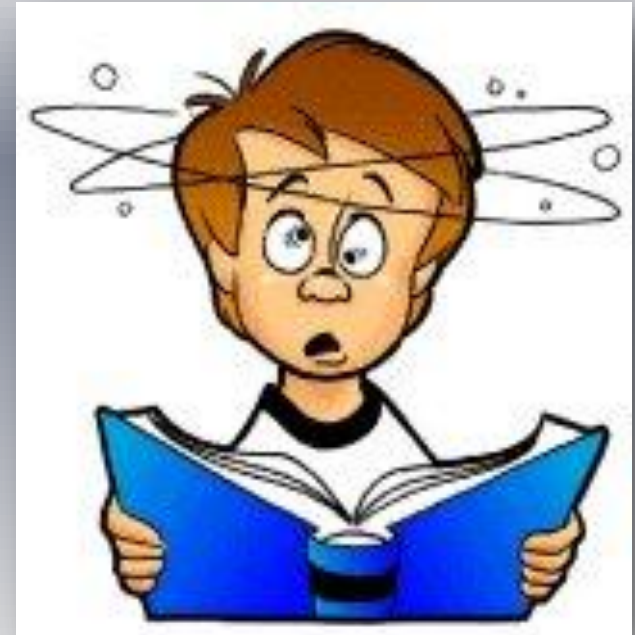
**Universities** – 24 public, 2 state, 3 private.

**Non–university institutions** -2public, 43 private.

# EXAMS

## Secondary schools

**Entrance exams**  
in Czech, Maths or other  
special subjects.



## School-leaving exams – maturita

The exam is usually taken in **4 subjects**.

Czech and one foreign language are **compulsory**.

**The state final exams** are only in Czech, Maths and  
foreign languages.

The final exams are **required for all universities**.

# THE ASSESSMENT

## Continuous assessment

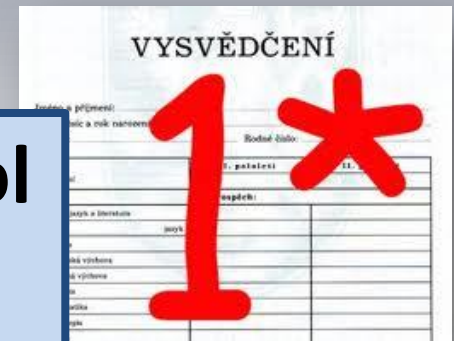
There is used a **5-point scale/marks**.

The results are **summarized** in a **school report** at the end of each term.

There are **2 terms** in the school year.

**Verbal assessment/marks** or combination of both may be used in the school report.

**There are no exams at the end of a school year.**



# EXAMS

## Universities



### Entrance exams

Each school determines its own admission criteria and the content of the entrance examination.

### State exams

They generally include **a defence of a thesis.**

The graduates get the **Bachelor's Degree** (3-4 years) or **Master's Degree** (4-6 years).

# THE CLASS

## Students

Minimum of **17** and maximum of **30** pupils.

The average class size is 20 pupils.

The **co-educational classes** are made up of pupils of the same age – boys and girls.

The pupils do not  
have to wear  
**the uniforms.**





# **THE SCHOOL DAY/WEEK/YEAR**

## **School year**

**10 months / 196 days of teaching.**

September – June.

**Short holidays** during the school year – autumn, Christmas and spring holidays.

**Long holidays** in summer – July, August.

## **Lessons**

**45 minutes/5 days a week**

**The timetable is 18 – 35 lessons a week.**

# SPORTS GRAMMAR SCHOOL PILSEN

**17 classes    463 students    43 teachers    14 coaches**

**The only state school of this type in Pilsen Region.**

It offers a **comprehensive study programme** of the grammar school and **sports programmes** for athletics, judo, volleyball, swimming, shooting and tennis in **A classes** and other sports practise in **B classes**.

**The aim:** to prepare students for **university studies**.  
**(84% last year)**

**8 years of study (11-19)**

**4 years of study (15-19)**

# STUDENTS SPORTS LIFE





# OTHER SPORTS AT SCHOOL





# TOURNAMENTS

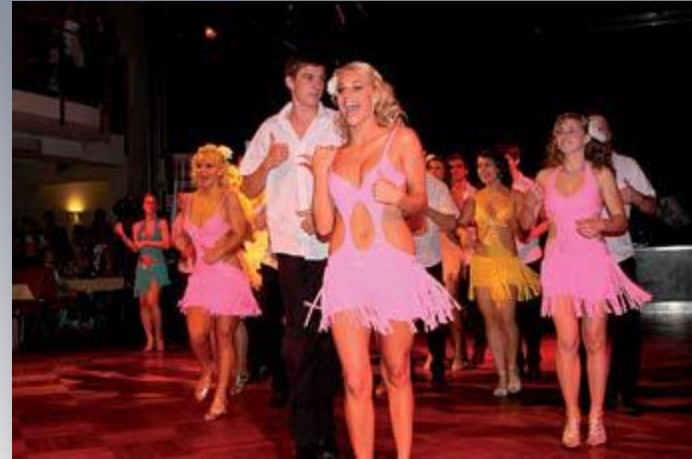




# OTHER ACTIVITIES



# OTHER ACTIVITIES





# SPORTS CAMPS





# RESCUE TEAMS AND FIREMEN



# HOLIDAYS – HURRAY – NO SCHOOL



# **SOURCES OF INFORMATION**

**National system overview on education systems in Europe and ongoing reforms.**

<http://webgate.ec.europa.eu/fpfis/mwikis/eurydice/index.php/Czech-Republic:Overview>

**Thank you for your attention.**